



Christmas Wish List and Gift Card Information

Can you believe that Christmas is almost here? We are all excited as we approach Christmas once again and get to celebrate with the pageantry, the plays, the carols, the parties, the nativities, the Christmas trees, the worship services, the gifts, and of course the gift cards! Our annual Christmas gift card drive is now beginning which gives us the opportunity to demonstrate the amazing love of Christ through our gifts as we contemplate and celebrate God's gift to us through His Son. We invite you to participate with us in this endeavor by purchasing gift cards to be given throughout our Children's Home ministry.

Our staff will utilize a portion of the gift cards to purchase personalized gifts for our children. The gifts will be wrapped and placed under the Christmas tree to be opened on Christmas morning. The children will also receive some gift cards on Christmas morning, which will allow them to go shopping. Any additional gift cards will be used after Christmas to purchase needed items for the children throughout the year.

It is most helpful for gift cards to be in increments of \$20 to \$100 to major chain stores and restaurants. Especially useful and flexible gift cards for our children include Amazon, Visa, TJ Maxx, Ross, Wal-Mart, and Epic Theater gift cards. Popular restaurants our staff like to include Darden Brands, Papa John's Pizza, Applebee's, Taco Bell, McDonald's and Chili's restaurants. We also strive to make Christmas morning special by giving each child a stocking made by friends of the Children's Home.

In order to prepare our campus for Christmas, we ask that your gift cards arrive **before December 5th**. Of course, we are happy to receive donations after that date. Helpful Hints:

- We have included a [gift card donation form](#) to be included with your gift card donation. The donor information is optional, but we do need the different types of cards and different denominations listed out. This will allow us to process the cards correctly when they come in. It is important that we receive this form back with your donation.
- We also ask that the gift card denomination be written somewhere on the gift card.
- Please include a gift card receipt with each gift card, as this will help us with processing the gift cards.
- For those who collect cash donations as part of a group contribution, we ask that you consider purchasing gift cards in increments of \$75 to \$100.
- If you know of multiple gift cards from the same donor, please list them together on subsequent lines.

If you have any questions or would like more information, please contact our Development office at 386.668.5088. Again, we thank you for your love and prayers for our children and this wonderful ministry.

LCR Workshop Happening in November

There is still time to sign up for our next LCR ZOOM Workshop! The Local Church Representative (LCR) is a vital person who connects the Children's Home with the local church. In order to help new LCRs acclimate themselves to the role, as well as to connect with seasoned LCRs and share updates about the ministry, the Children's Home typically holds a number of in-person LCR workshops at the beginning of the year. The last few years, we have also been able to offer these training events virtually through Zoom.

The next virtual LCR workshop will be held via ZOOM on Wednesday, November 16 at 12:00 p.m. To attend, please RSVP to brian.carr@fumch.org and you will be sent information and a link for the ZOOM event. For those unable to attend the live Zoom, we will make a recording available for later viewing. This will allow LCRs to continue communicating the ministry of the Children's Home with your local church. We look forward to seeing you at the workshop!

Day of Service

Monday, October 17th wasn't just a student holiday for Volusia County Schools. Our youth were very busy serving in their community on our Day of Service! They took advantage of a day off from school to reach out and serve in their community to do whatever was needed whether it was raking or landscaping or preparing a classroom or talking to residents or cleaning windows, etc. They joyfully participated in a Day of Service and did various projects in multiple locations that included All Saints Episcopal Church – Enterprise, FL, Enterprise Elementary School, First United Methodist Church in Sanford, Lakeside United Methodist Church, and Orange City Nursing and Rehab Center. In addition to the youth and staff, two members from our Board of Trustees joined them – Brittany Sobering and Melissa Surface Stump. Everyone had a lot of fun and did a lot of work! We are so grateful for our community and the opportunities to serve them!

Campus Needs List

We currently have the need for:

Deodorant for Boys & Girls

Hair Brushes & Picks

Bed Pillows

Body Wash for Girls

Shower Liners

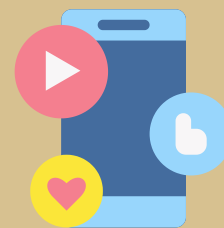
Laundry Baskets

For more information on donations, volunteering, or campus tours please contact

Volunteer Manager, Lynn Bellomy

lynn.bellomy@fumch.org

386.668.4774 ext. 2321.



Be sure to like and share us on social media!